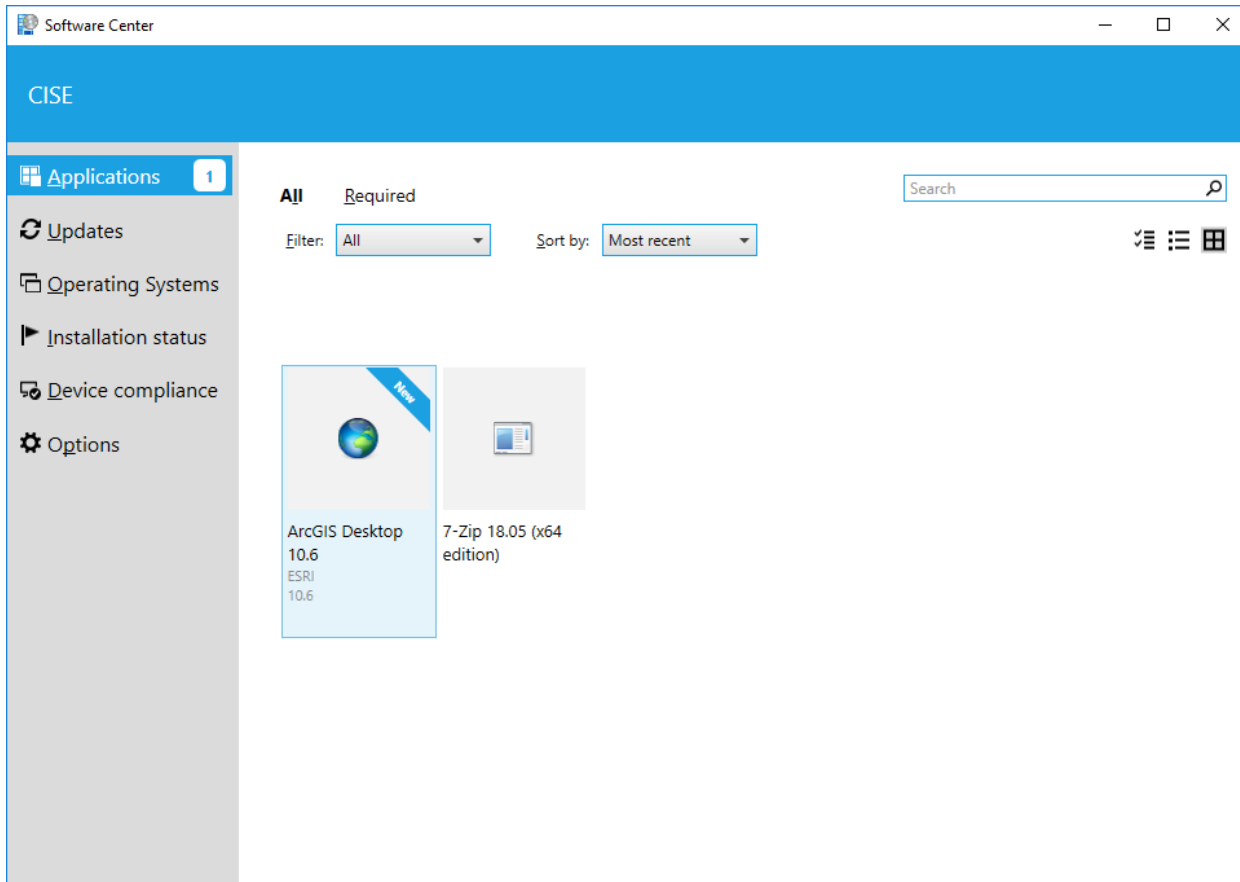


# ArcGIS Desktop 10.6 Install

Chrissy Willow Rothgeb, updated 2018.06.14

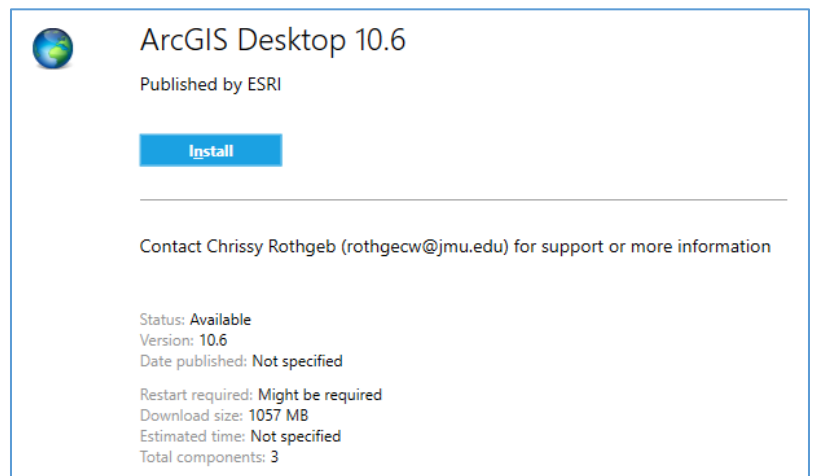
ArcGIS Desktop is now available from the Software Center application on your JMU-managed Windows machine. You can find the Software Center under the Start menu. Within Software Center, look in the Applications section. You should now see a listing for “ArcGIS Desktop 10.6”:



Select the application package, then click the button to install. The installation will take approximately 3.09GB disk space and may require a reboot.

If prompted to reboot, do so at your convenience. When you log back into the system, System Center should automatically continue with the install.

Once you are notified that ArcGIS Desktop has been installed, you can run ArcMap or any of the application from the Start menu. Licensing will already be configured to work from the network.

A detailed view of the "ArcGIS Desktop 10.6" application package. It features a globe icon and the text "Published by ESRI". A prominent blue "Install" button is visible. Below the button, there is a line of text: "Contact Chrissy Rothgeb (rothgecw@jmu.edu) for support or more information". At the bottom, technical details are listed: "Status: Available", "Version: 10.6", "Date published: Not specified", "Restart required: Might be required", "Download size: 1057 MB", "Estimated time: Not specified", and "Total components: 3".

If you have any difficulty with the install or have any questions, please contact [Cise-IT@jmu.edu](mailto:Cise-IT@jmu.edu).