

# Clean Energy Development and Services (CEDS)



## Property Information Sheet

Property or Site Name Buckingham Correctional Parcel  
Address 1349 Correctional Center Rd  
City State Zip Dillwyn, VA 23936  
County Buckingham County

Property Size Acres 1017.8 acres  
GPS Coordinates 37.569741, -78.472876  
Number of sites in Parcel 2  
Annual Energy Usage (Parcel) 12,827,793 kWh  
Utility Provider Dominion



Google Earth 3D Image

Area for Potential PV Installation 131.6 acres

Table 1: Solar PV Potential for Property.

Solar Array needed to meet Annual Kwh Demand	9.35 MW (9353 kW DC)
Number of 250 watt panels needed	37,413
Annual Solar Insolation at Site	5.01 (kWh/m2/Day)
Acres needed for Array (8 acre per MW)	75

### Site overview

The Buckingham parcel contains two correctional facilities. The surrounding terrain is rolling with some steep slopes. There are open grassy areas as well as agricultural fields.

### Facilities within the Parcel

Buckingham Correctional Center  
Dillwyn Correctional Center

### Nearby State Entities

None.



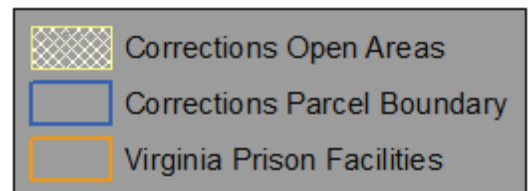
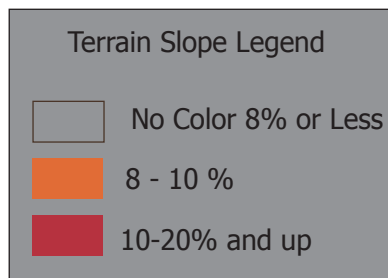
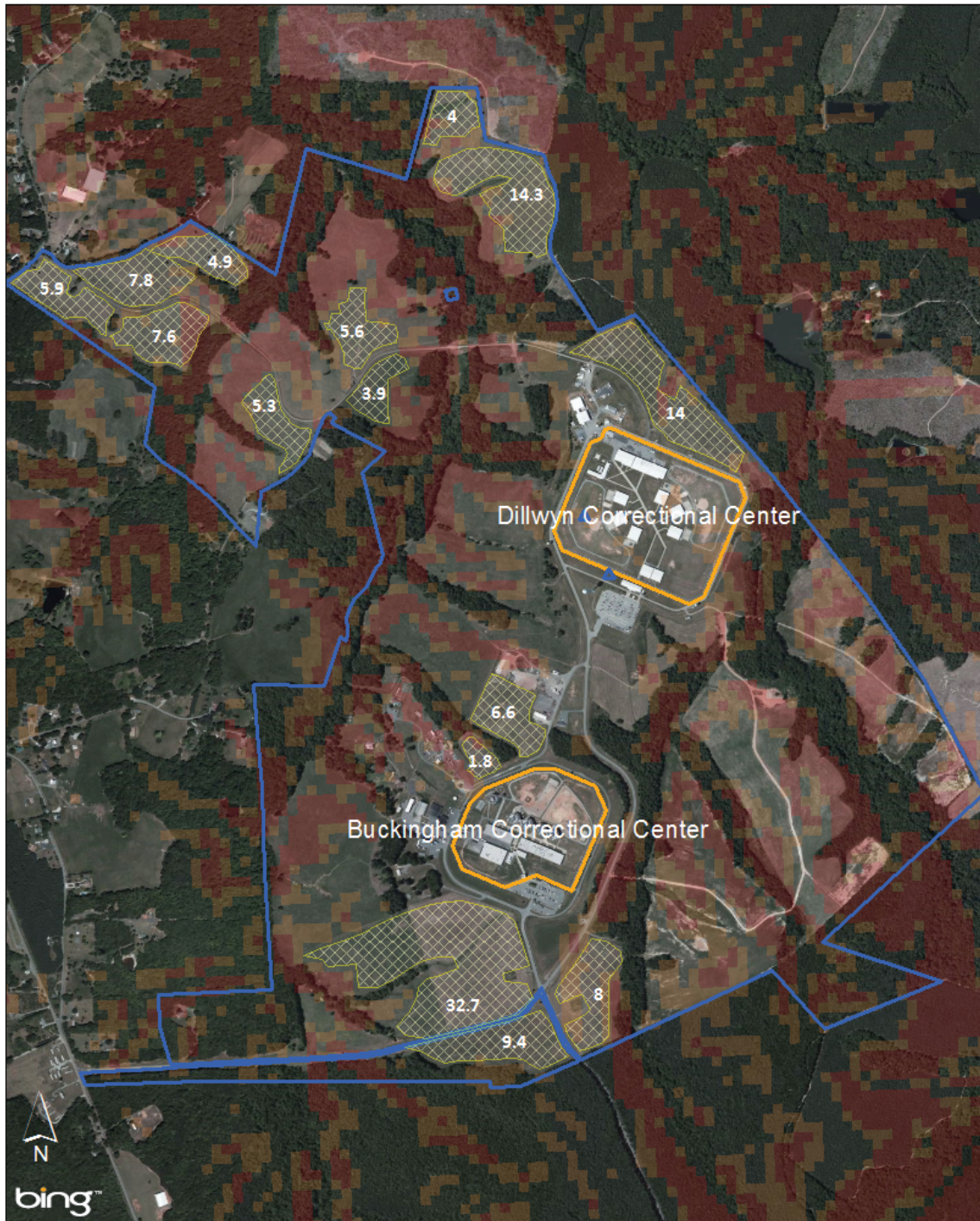
# Buckingham Correctional Parcel

1349 Correctional Center Rd

Dillwyn, VA 23936

Buckingham County

Esri ArcGIS Screenshot



Buckingham Correctional Parcel  
1349 Correctional Center Rd  
Dillwyn, VA 23936  
Buckingham County



Google Earth 3D Image



