

Clean Energy Development and Services (CEDS)



Property Information Sheet

Property or Site Name State Farm Goochland Parcel
Address 1954 State Farm Rd
City State Zip State Farm, VA 23160
County Goochland County

Property Size Acres 1013.9 acres
GPS Coordinates 37.645107, -77.828745
Number of sites in Parcel 2
Annual Energy Usage (Parcel) 616,302 kWh
Utility Provider Dominion



Google Earth 3D Image

Area for Potential PV Installation 275 acres

Table 1: Solar PV Potential for Property.

Solar Array needed to meet Annual Kwh Demand	0.45 MW (450 kW DC)
Number of 250 watt panels needed	1,797
Annual Solar Insolation at Site	5.01 (kWh/m2/Day)
Acres needed for Array (8 acre per MW)	3.6

Site overview

The State Farm Complex in Goochland County contains two facilities. The property runs adjacent to the James River, and there are a number of agricultural fields on the site. Open areas were drawn around areas of steeper slopes. This property may have more available land than shown here, depending on how much of the agricultural fields may have been graded.

Note: The VGIN County Parcel data was not available for this site. Boundaries were drawn as well as possible based on visual comparison with the Goochland County online GIS maps.

Facilities within the Parcel

James River Correctional Center
James River Work Center

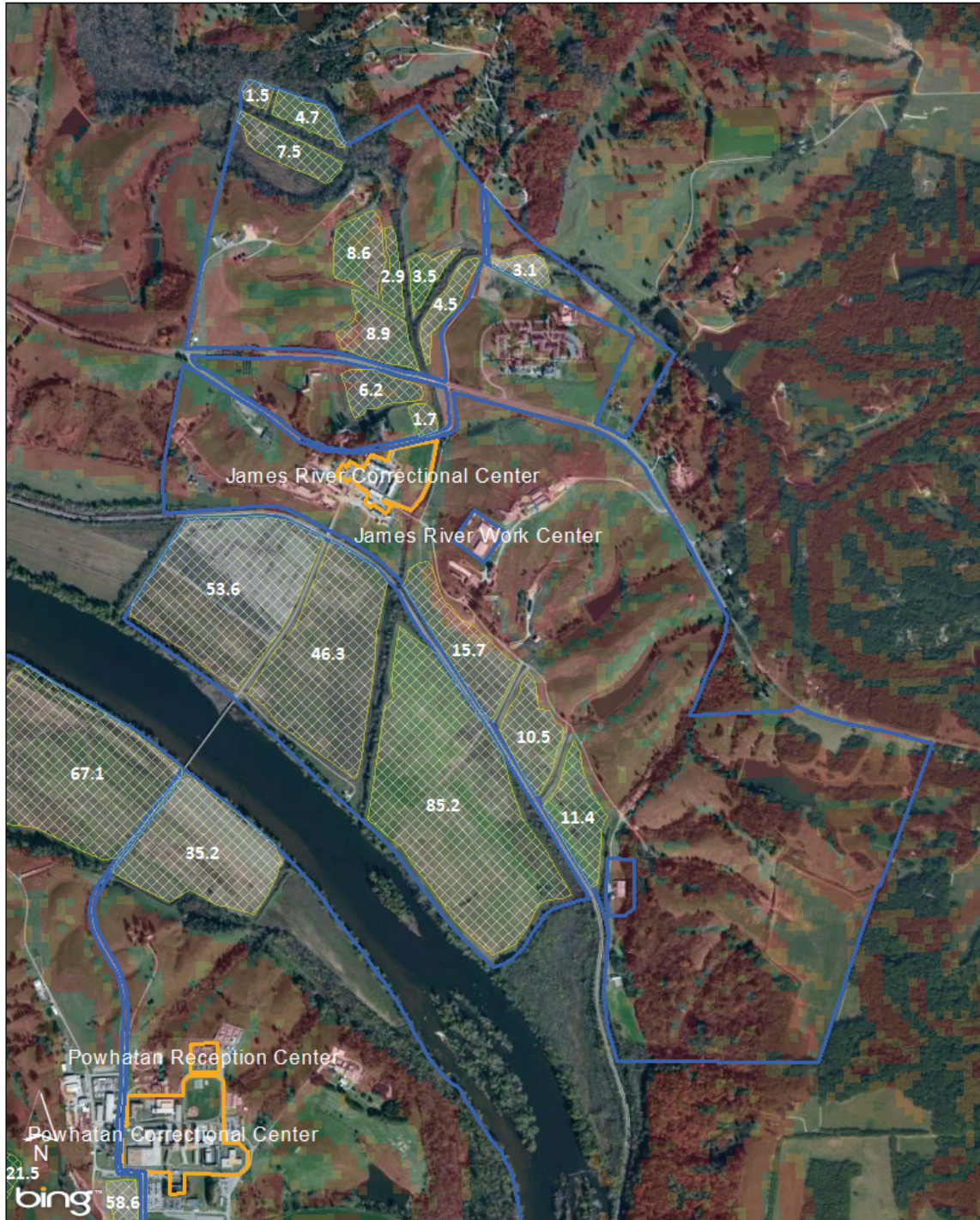
Nearby State Entities

On the other side of the river is the State Farm Complex in Powhatan County. There are three corrections facilities in that parcel.



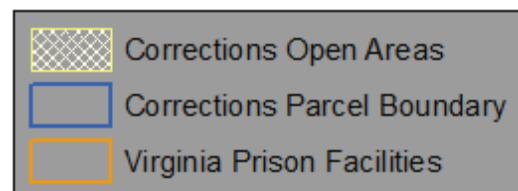
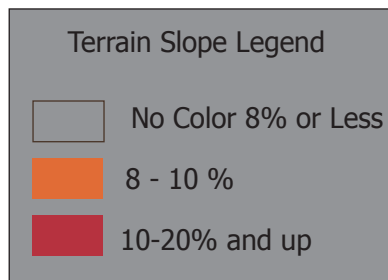
State Farm Goochland Parcel

1954 State Farm Rd
State Farm, VA 23160
Goochland County



0 0.3 Miles

Esri ArcGIS Screenshot



State Farm Goochland Parcel

1954 State Farm Rd
State Farm, VA 23160
Goochland County



Google Earth 3D Image



