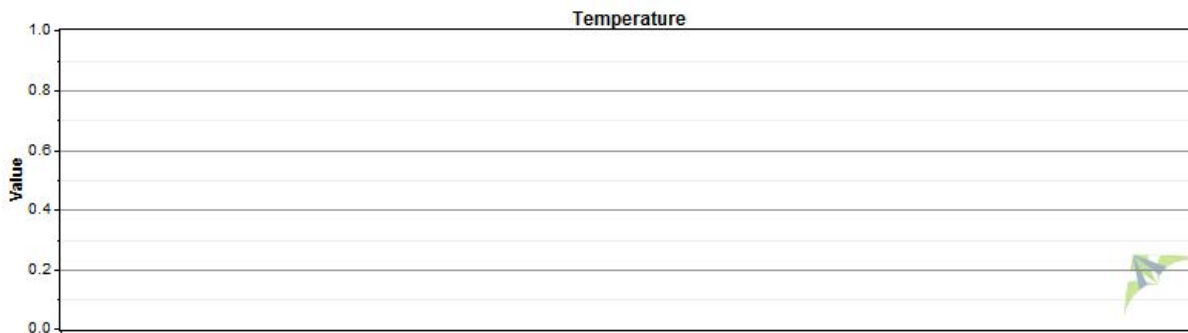


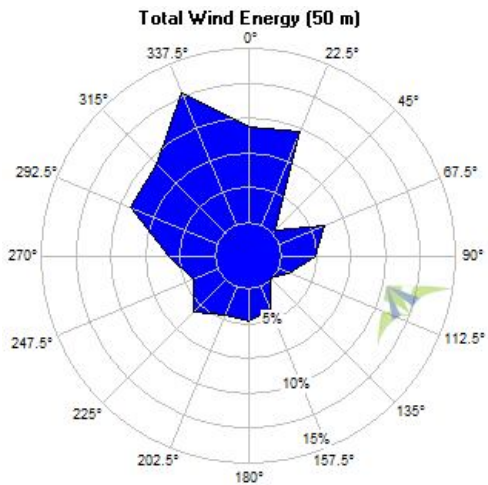
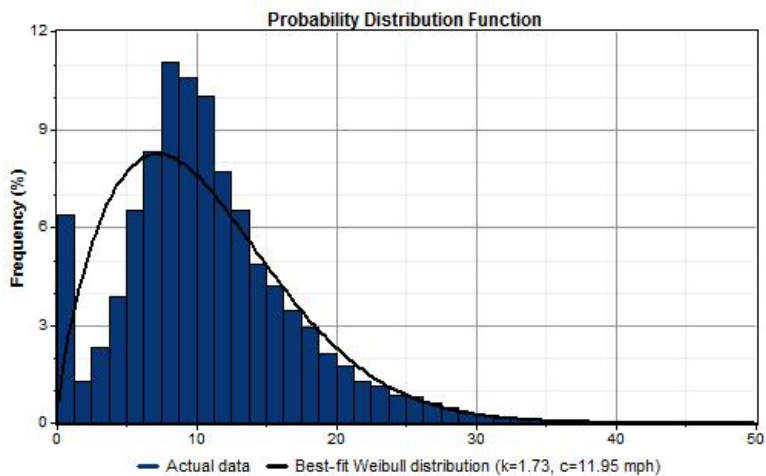
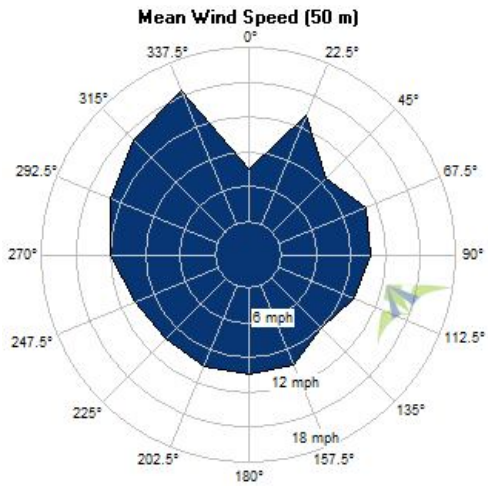
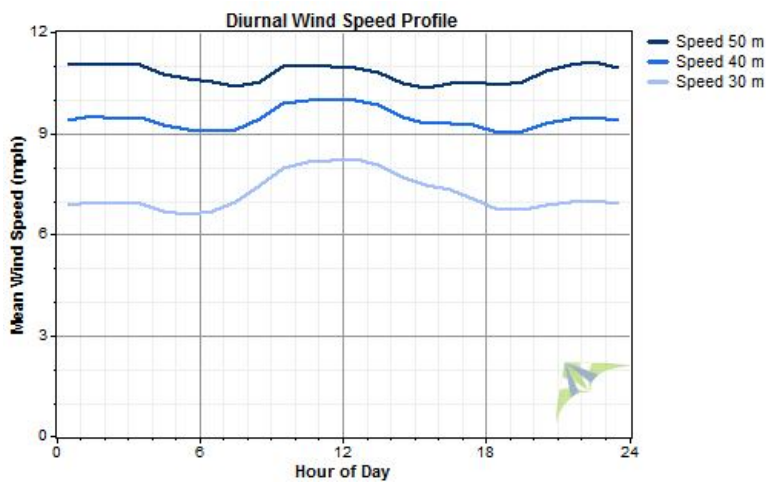
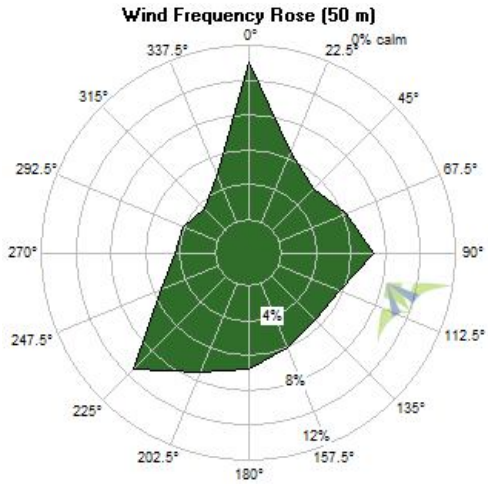
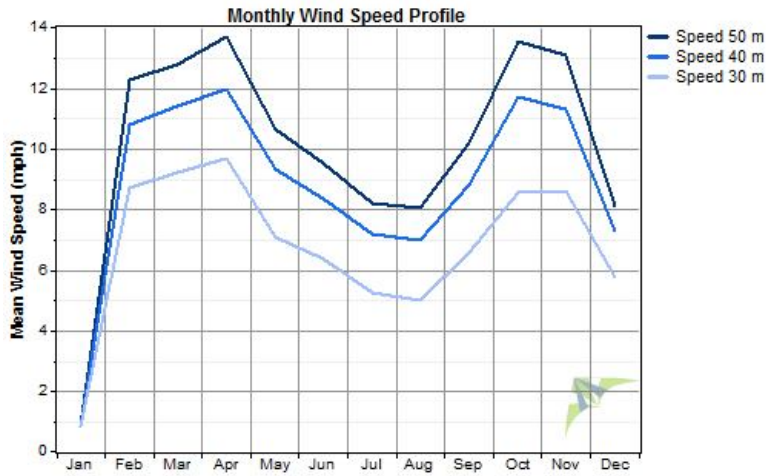
**Data Set Properties**

Report Created: 8/13/2013 11:43 using Windographer 2.4.11  
 Filter Settings: <Unflagged data>

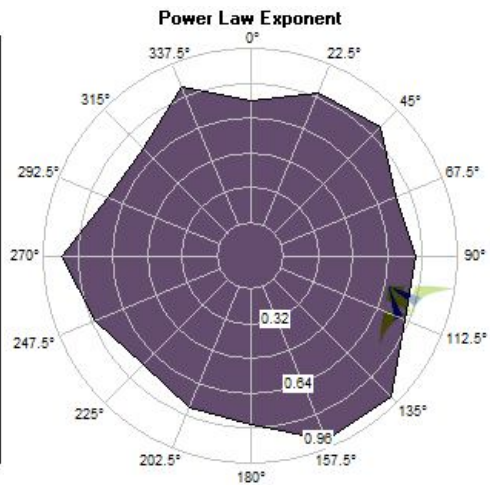
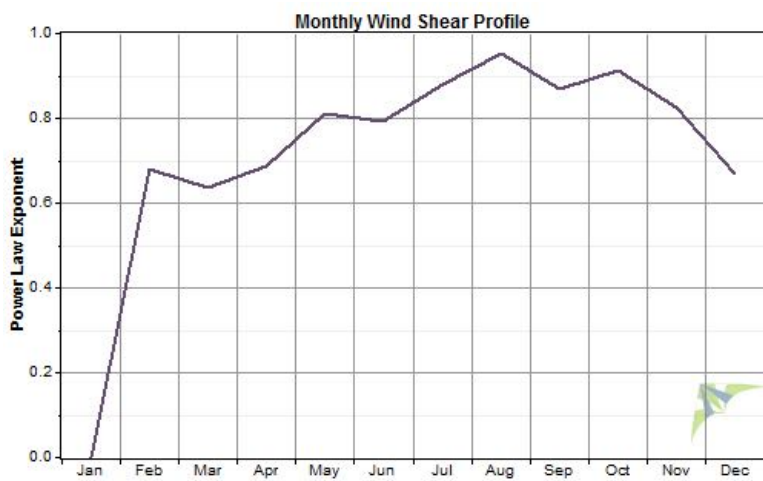
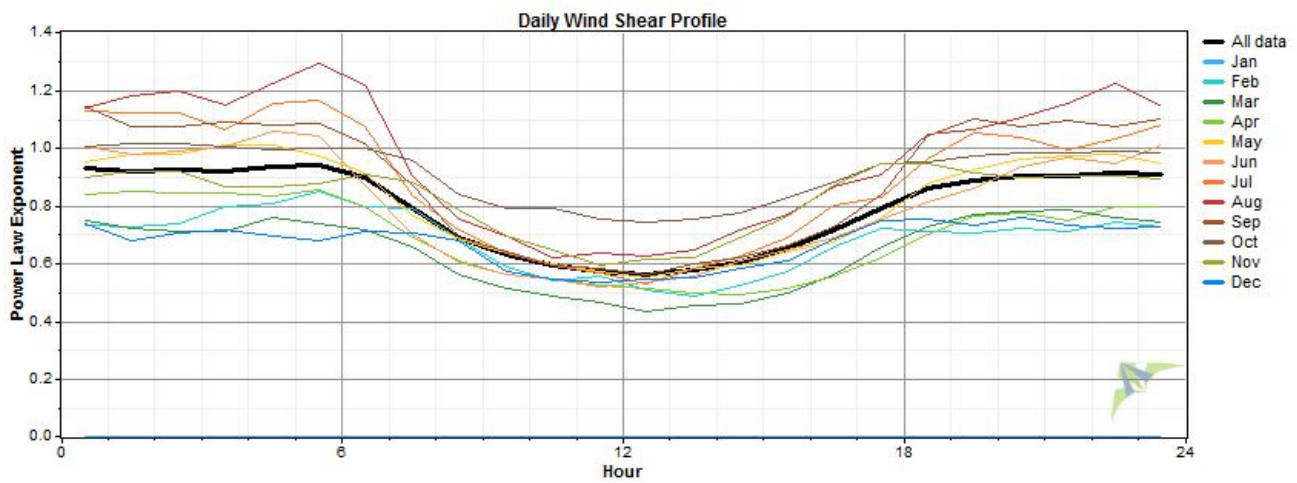
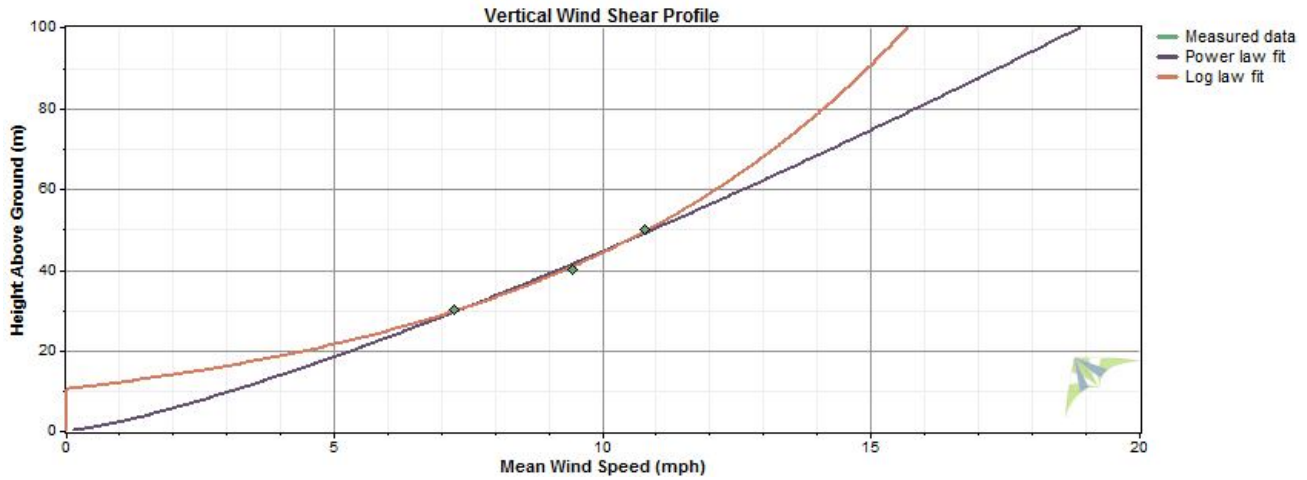
Variable	Value
Latitude	N 37° 16' 0.000"
Longitude	W 76° 1' 0.000"
Elevation	19 m
Start date	2/11/2005 15:20
End date	1/3/2006 11:00
Duration	11 months
Length of time step	10 minutes
Calm threshold	0.4 mph
Mean temperature	14.9 °C
Mean pressure	101.1 kPa
Mean air density	1.223 kg/m <sup>3</sup>
Power density at 50m	150 W/m <sup>2</sup>
Wind power class	1 (Poor)
Power law exponent	0.788
Surface roughness	10.5 m
Roughness class	5.87
Roughness description	Urban



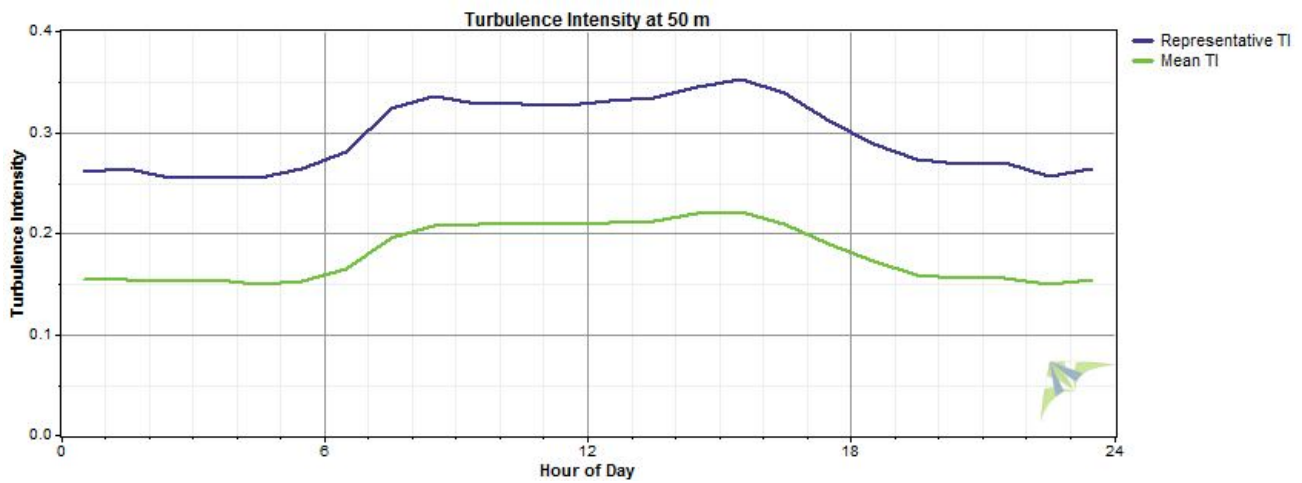
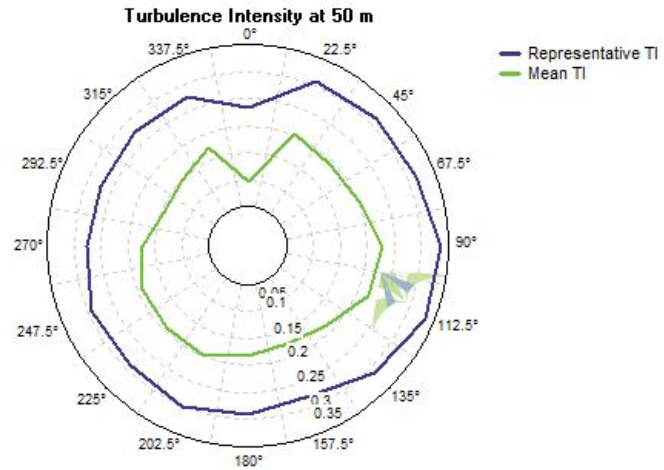
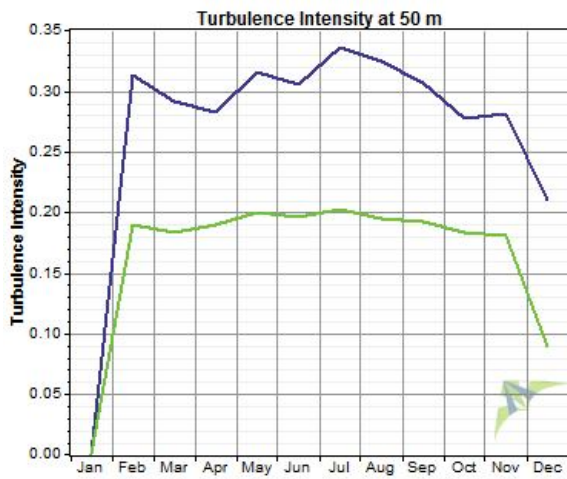
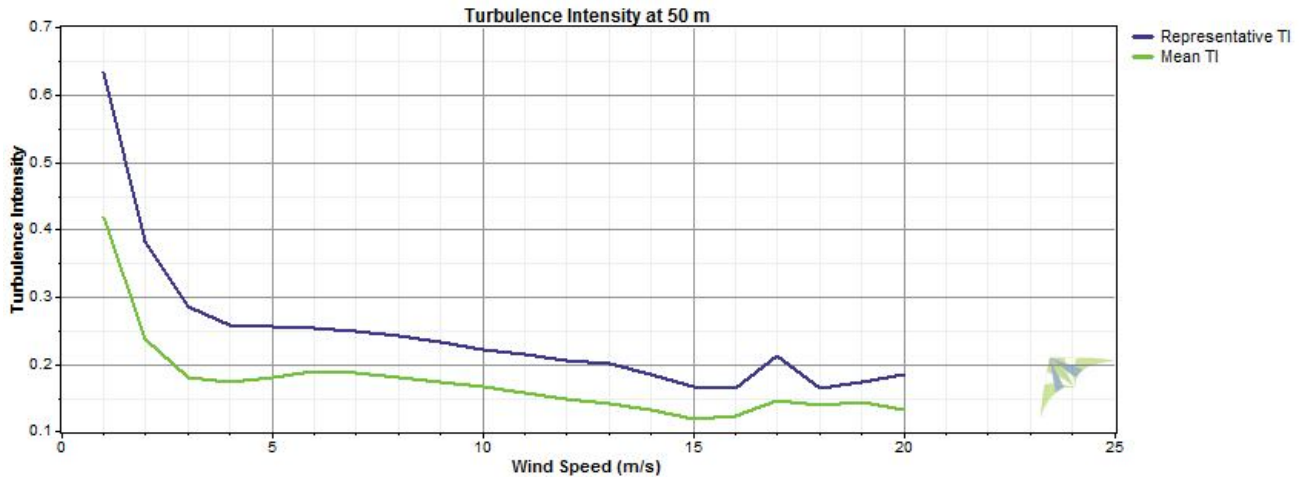
## Wind Speed and Direction



Wind Shear



### Turbulence Intensity



## Data Column Properties

Number	Label	Units	Height	Possible Records	Valid Records	Recovery Rate (%)	Mean	Min	Max	Std. Dev
1	Speed 50 m	mph	50 m	46,918	46,918	100.00	10.78	0.80	45.80	6.06
2	Speed A SD	mph	50 m	46,918	46,918	100.00	1.93	0.00	12.60	1.17
3	Speed A Max	mph	50 m	46,918	46,918	100.00	15.52	0.80	61.50	8.58
4	Speed A Min	mph	50 m	46,918	46,918	100.00	5.76	0.80	33.20	3.83
5	Speed 40 m	mph	40 m	46,918	46,918	100.00	9.44	0.80	43.00	5.42
6	Speed B SD	mph	40 m	46,918	46,918	100.00	2.01	0.00	11.50	1.19
7	Speed B Max	mph	40 m	46,918	46,918	100.00	14.57	0.80	58.10	8.22
8	Speed B Min	mph	40 m	46,918	46,918	100.00	4.39	0.80	29.00	3.09
9	Speed 30 m	mph	30 m	46,918	46,918	100.00	7.23	0.80	36.50	4.44
10	Speed C SD	mph	30 m	46,918	46,918	100.00	2.116	0.000	9.700	1.209
11	Speed C Max	mph	30 m	46,918	46,918	100.00	12.95	0.80	52.10	7.65
12	Speed C Min	mph	30 m	46,918	46,918	100.00	2.43	0.80	19.60	2.13
13	Direction 50 m	°	50 m	46,918	46,918	100.00	336.2	0.0	356.0	103.9
14	Direction A SD	°	50 m	46,918	46,918	100.00	10.6	0.0	127.0	7.1
15	Direction A Max	°	50 m	46,918	46,918	100.00	160.5	0.0	359.0	106.6
16	Direction A Min	°	50 m	46,918	46,918	100.00	0	0	0	0
17	Direction 40 m	°	40 m	46,918	46,918	100.00	351.1	0.0	356.0	103.3
18	Direction B SD	°	40 m	46,918	46,918	100.00	13.3	0.0	117.0	7.7
19	Direction B Max	°	40 m	46,918	46,918	100.00	160.4	0.0	359.0	106.4
20	Direction B Min	°	40 m	46,918	46,918	100.00	0	0	0	0
21	Air Density	kg/m <sup>3</sup>		46,918	46,918	100.00	1.223	1.222	1.222	0.000
22	Speed 50 m TI			46,918	46,918	100.00	0.180	0.000	1.188	0.095
23	Speed 40 m TI			46,918	46,918	100.00	0.212	0.000	1.158	0.101
24	Speed 30 m TI			46,918	46,918	100.00	0.298	0.000	1.312	0.129
25	Speed 50 m WPD	W/m <sup>2</sup>		46,918	46,918	100.00	143	0	5,246	270
26	Speed 40 m WPD	W/m <sup>2</sup>		46,918	46,918	100.00	100	0	4,341	204
27	Speed 30 m WPD	W/m <sup>2</sup>		46,918	46,918	100.00	49	0	2,655	107